



## FREE GUIDED FACTORY AND MODEL VILLAGE TOURS

Head on over for a free, personalized model tour, and one of our knowledgeable housing consultants will answer any questions you may have.



## HOMES ARE GOING FAST!

Come see our newest homes and get  
Factory Direct Pricing!

**800-645-4943**

550 SE Booth Bend Rd  
McMinnville, OR, 97128

[FactoryDirectOregon.com](http://FactoryDirectOregon.com)

FACTORY DIRECT PRICING



**800-645-4943**

550 SE Booth Bend Rd  
McMinnville, OR, 97128



SCAN ME

Check out our  
latest promotions!

[FactoryDirectOregon.com](http://FactoryDirectOregon.com)



## Your Beautiful New Home IS WAITING

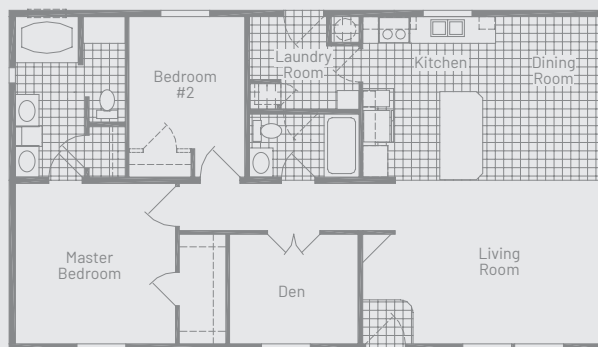
START YOUR HOME JOURNEY

CHAMPION®  
HOMES CENTER

## WHY CHAMPION HOMES CENTER

- All homes are sold factory direct, saving our home buyers money
- Wide variety
- Over 18,000 happy homebuyers
- Free factory and model village tours daily
- Specializes in custom orders
- Famous for running HUGE sales & promotions
- Furnished model villages at every sales center
- Convenient, complimentary hotel rooms for customers

### POPULAR MODEL



## OUR ATHENA FLOOR PLAN

## OUR TEAM OF PROFESSIONALS ARE READY TO ASSIST YOU!

### LOW PRESSURE. EXPERT ADVICE.

Champion Homes Center in McMinnville, OR, is your source for new homes directly from the factory. We deliver homes to **Oregon, Washington & Northern Idaho.**



# SKYLINE®

## THE SKYLINE HOME BUILDERS PROMISE



### PRODUCTION

The unsurpassed quality of every Skyline home is possible thanks to innovative manufacturing processes and a commitment to outstanding design.



### MATERIAL

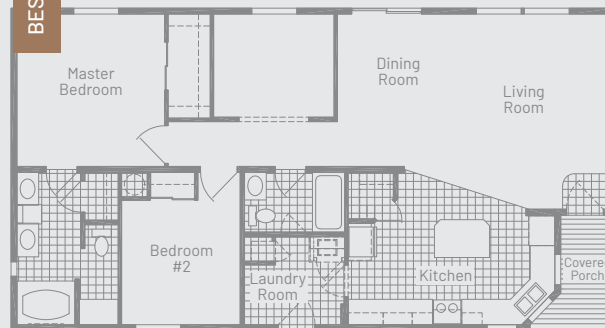
Each unit is created in an environmentally controlled, state-of-the-art facility by skilled artisans, using only the finest materials.



### QUALITY CONTROL

This setting allows for a precise assembly system. One that achieves strict efficiency and exacting quality control standards, resulting in remarkably crafted homes.

### BEST SELLER



## OUR HALSEY FLOOR PLAN

# FAMILY-OWNED AND OPERATED FOR OVER 20 YEARS

\*Source: Federal Housing Finance Agency Q2 2018 Home Price Index  
Floor plans subject to change

## STYLISH HOME, ATTAINABLE PRICE



### SAME INVESTMENT AS TRADITIONAL HOMES

Manufactured homes appreciate at nearly the same rate as site-built homes.\*



### BUILT TO LAST

Quality construction according to federally mandated building code and inspections.



### SPEEDY CONSTRUCTION

Homes are made efficiently with production lines, robotics, and indoor production, taking weather out of the equation.



### LESS WASTE = BETTER FOR THE ENVIRONMENT

Factory-built houses utilize excess construction materials in other homes.



### ALWAYS AFFORDABLE

Quality materials are purchased in bulk, passing the savings on to you!