

# Summerville

Ramada Value Series



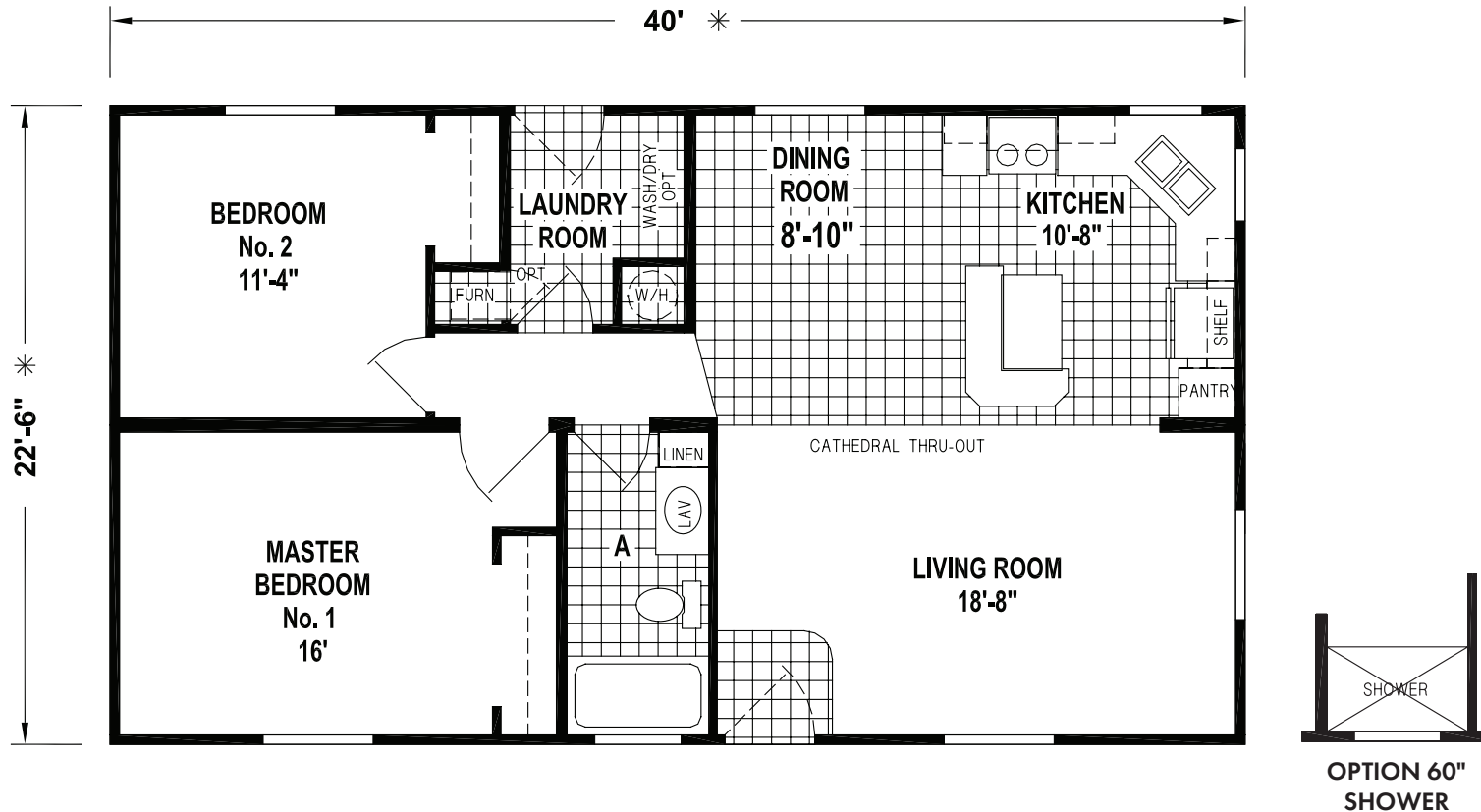
# Factory Expo

"Factory Direct Value" HOME CENTERS

2 Bedroom, 1 Bath  
Approx. 900 Sq. Ft.

Last Updated: 7-26-18

OPTION SLIDING  
GLASS DOOR



Factory Expo Home Centers  
550 Booth Bend Road  
McMinnville, Oregon 97128

I authorize Factory Expo to build my house, per this plan.  
X \_\_\_\_\_  
Customer Signature/Date

1-800-645-4943 www.NorthWestFactoryDirectHomes.com 1-800-645-4943 www.NorthWestFactoryDirectHomes.com

Important: Due to our policy of constant improvement, all information in our brochures may vary from actual home. The right is reserved to make changes at any time, without notice or obligation, in colors, materials, specifications, processes, and models. All dimensions and square footage calculations are nominal and approximate figures. Please check with your sales person for specific and current information.